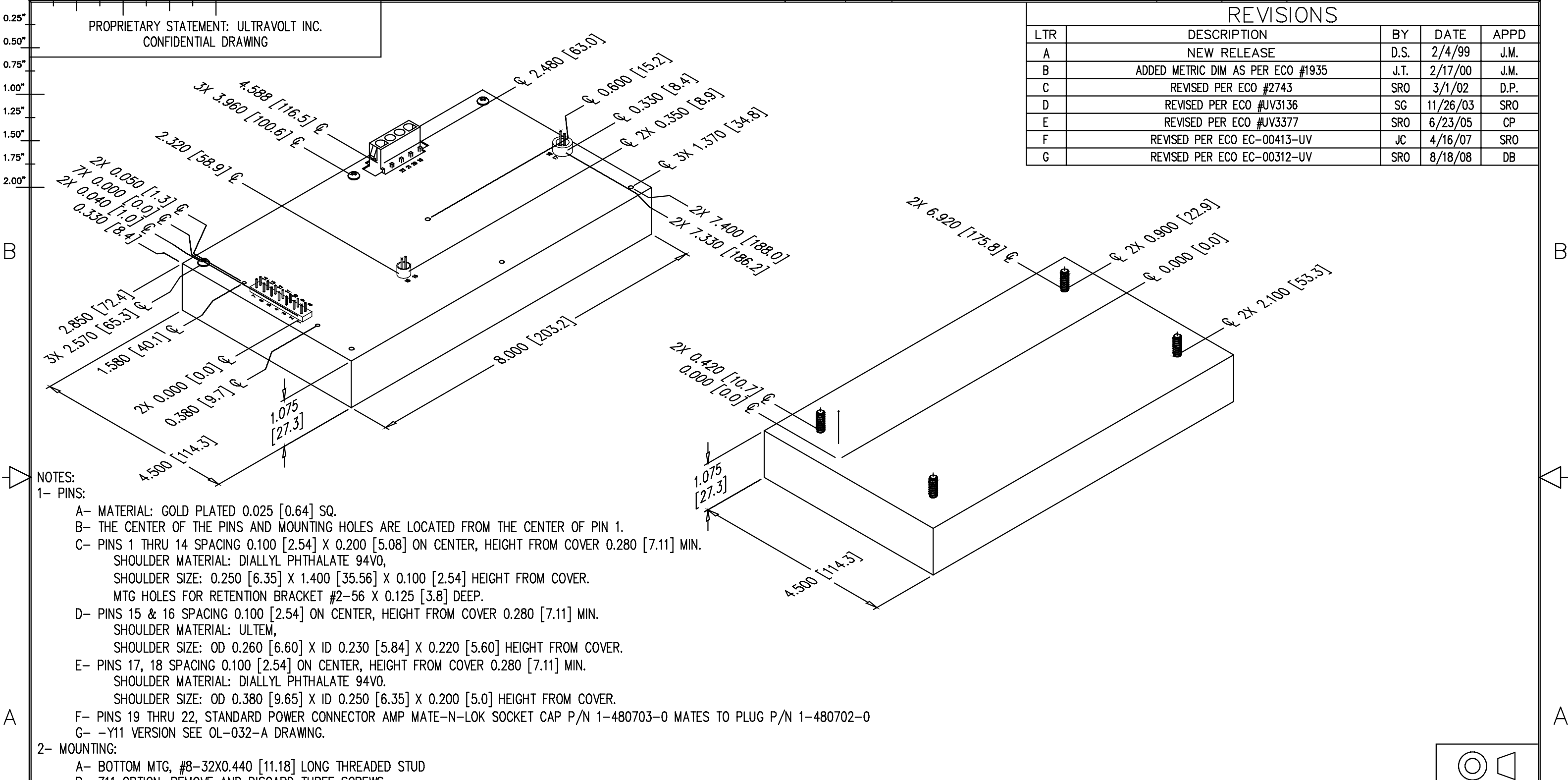


0.00" 0.25" 0.50" 0.75" 1.00" 1.25" 1.50" 1.75" 2.00"

PROPRIETARY STATEMENT: ULTRAVOLT INC.  
CONFIDENTIAL DRAWING

REVISIONS				
LTR	DESCRIPTION	BY	DATE	APPD
A	NEW RELEASE	D.S.	2/4/99	J.M.
B	ADDED METRIC DIM AS PER ECO #1935	J.T.	2/17/00	J.M.
C	REVISED PER ECO #2743	SRO	3/1/02	D.P.
D	REVISED PER ECO #UV3136	SG	11/26/03	SRO
E	REVISED PER ECO #UV3377	SRO	6/23/05	CP
F	REVISED PER ECO EC-00413-UV	JC	4/16/07	SRO
G	REVISED PER ECO EC-00312-UV	SRO	8/18/08	DB



NOTES:  
1- PINS:  
A- MATERIAL: GOLD PLATED 0.025 [0.64] SQ.  
B- THE CENTER OF THE PINS AND MOUNTING HOLES ARE LOCATED FROM THE CENTER OF PIN 1.  
C- PINS 1 THRU 14 SPACING 0.100 [2.54] X 0.200 [5.08] ON CENTER, HEIGHT FROM COVER 0.280 [7.11] MIN.  
SHOULDER MATERIAL: DIALLYL PHTHALATE 94V0,  
SHOULDER SIZE: 0.250 [6.35] X 1.400 [35.56] X 0.100 [2.54] HEIGHT FROM COVER.  
MTG HOLES FOR RETENTION BRACKET #2-56 X 0.125 [3.8] DEEP.  
D- PINS 15 & 16 SPACING 0.100 [2.54] ON CENTER, HEIGHT FROM COVER 0.280 [7.11] MIN.  
SHOULDER MATERIAL: ULTEM,  
SHOULDER SIZE: OD 0.260 [6.60] X ID 0.230 [5.84] X 0.220 [5.60] HEIGHT FROM COVER.  
E- PINS 17, 18 SPACING 0.100 [2.54] ON CENTER, HEIGHT FROM COVER 0.280 [7.11] MIN.  
SHOULDER MATERIAL: DIALLYL PHTHALATE 94V0.  
SHOULDER SIZE: OD 0.380 [9.65] X ID 0.250 [6.35] X 0.200 [5.0] HEIGHT FROM COVER.  
F- PINS 19 THRU 22, STANDARD POWER CONNECTOR AMP MATE-N-LOK SOCKET CAP P/N 1-480703-0 MATES TO PLUG P/N 1-480702-0  
G- -Y11 VERSION SEE OL-032-A DRAWING.

2- MOUNTING:  
A- BOTTOM MTG, #8-32X0.440 [11.18] LONG THREADED STUD  
B- Z11 OPTION, REMOVE AND DISCARD THREE SCREWS,  
ADD #4-40 THREADED INSERT AT 7 LOCATIONS.

3- CONSTRUCTION:  
EPOXY FILLED ALUMINUM BOX  
CHEM FILM PER MIL-C-5541 CLASS 1A

4- TOLERANCE:  
A- OVERALL +/-0.025 [0.64]  
B- PIN TO PIN +/-0.015 [0.38]  
C- MOUNTING HOLE LOCATION +/- 0.025 [0.64]

UNLESS OTHERWISE SPECIFIED DIMENSION ARE IN INCHES TOLERANCES ARE:		CUSTOMER	
2 PL DEC ± .02	FRACT ± 1/64	DRAWN	S. Orban
3 PL DEC ± .010	ANGLES ± 2'	CHKD	D. Parant
		MFG	N/A
		MFG ENGR	N/A
		PROCESS	N/A
		QA	N/A
		CHIEF ENG	N/A
		DATE	02/04/02
			3/20/02
HOLE DIA	TOLERANCES		
.0135 THRU .125	+ .004 - .004		
.126 THRU .250	+ .005 - .005		
.251 THRU .500	+ .006 - .006		
.501 THRU .750	+ .008 - .008		
.751 THRU 1.000	+ .010 - .010		
1.001 THRU 2.000	+ .012 - .012		
DASH NUMBER	NEXT ASSY	USED ON	
APPLICATION			
CFN: OL-032_revG_HP_C_250W.dwg			

**ULTRAVOLT, INC.**  
1800 OCEAN AVE. FRNT, RONKONKOMA, N.Y. 11779  
1-831-471-4444

OUTLINE  
HIGH POWER 'C' SERIES  
250W 1/8KV - 6KV

PART NUMBER: OL-032 REV G

SCALE NONE DO NOT SCALE THIS DRAWING SHEET 1 OF 1