

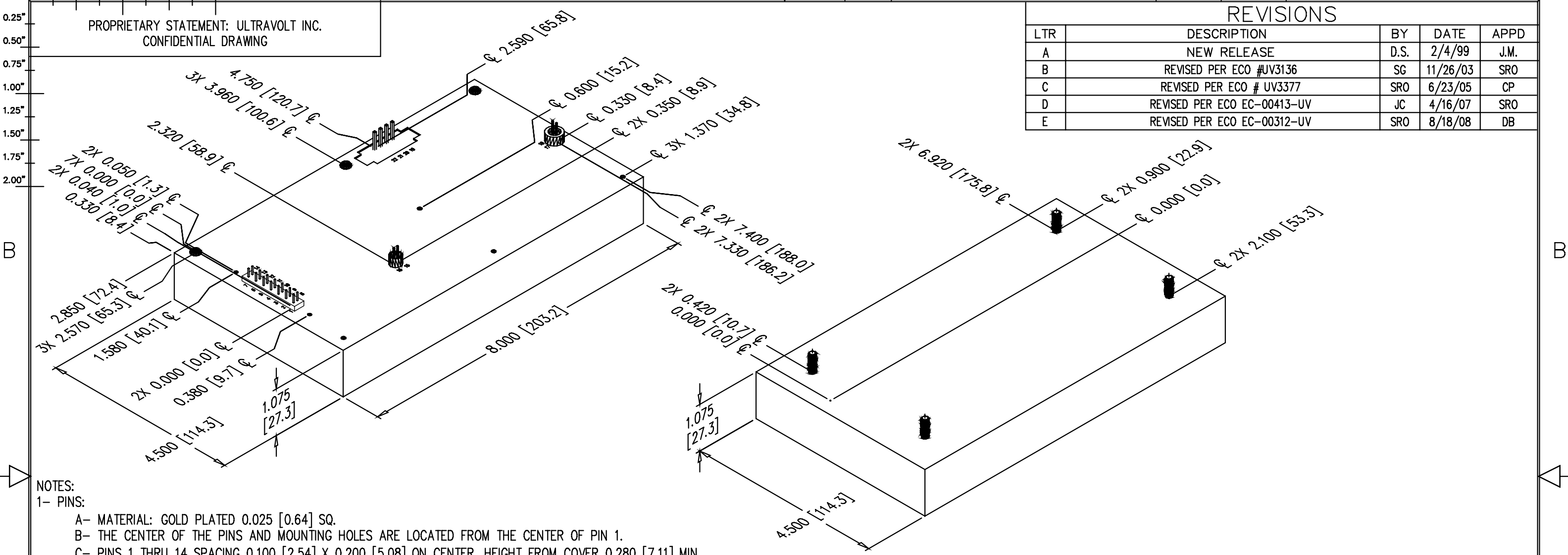
0.00" 0.25" 0.50" 0.75" 1.00" 1.25" 1.50" 1.75" 2.00"

2

PROPRIETARY STATEMENT: ULTRAVOLT INC.
CONFIDENTIAL DRAWING

REVISIONS

| LTR | DESCRIPTION | BY | DATE | APPD |
|-----|-----------------------------|------|----------|------|
| A | NEW RELEASE | D.S. | 2/4/99 | J.M. |
| B | REVISED PER ECO #UV3136 | SG | 11/26/03 | SRO |
| C | REVISED PER ECO # UV3377 | SRO | 6/23/05 | CP |
| D | REVISED PER ECO EC-00413-UV | JC | 4/16/07 | SRO |
| E | REVISED PER ECO EC-00312-UV | SRO | 8/18/08 | DB |



NOTES:

- 1- PINS:
- A- MATERIAL: GOLD PLATED 0.025 [0.64] SQ.
 - B- THE CENTER OF THE PINS AND MOUNTING HOLES ARE LOCATED FROM THE CENTER OF PIN 1.
 - C- PINS 1 THRU 14 SPACING 0.100 [2.54] X 0.200 [5.08] ON CENTER, HEIGHT FROM COVER 0.280 [7.11] MIN.
SHOULDER MATERIAL: DIALLYL PHTHALATE 94V0,
SHOULDER SIZE: 0.250 [6.35] X 1.400 [35.56] X 0.100 [2.54] HEIGHT FROM COVER.
MTG HOLES FOR RETENTION BRACKET #2-56 X 0.125[3.8] DEEP.
 - D- PINS 15 & 16 SPACING 0.100 [2.54] ON CENTER, HEIGHT FROM COVER 0.280 [7.11] MIN.
SHOULDER MATERIAL: ULTEM,
SHOULDER SIZE: OD 0.260 [6.60] X ID 0.230 [5.84] X 0.220 [5.60] HEIGHT FROM COVER.
 - E- PINS 17, 18 SPACING 0.100 [2.54] ON CENTER, HEIGHT FROM COVER 0.280 [7.11] MIN.
SHOULDER MATERIAL: DIALLYL PHTHALATE 94V0.
SHOULDER SIZE: OD 0.380 [9.65] X ID 0.250 [6.35] X 0.200 [5.0] HEIGHT FROM COVER.
 - F- PINS 19 THRU 22, GOLD PLATED 0.045 [1.14] SQ., SPACING 0.156 [3.96] ON CENTER,
HEIGHT FROM COVER 0.400 [10.16] MIN.

- 2- MOUNTING:
- A- BOTTOM MTG, #8-32X0.440 [11.18] LONG THREADED STUD
 - B- Z11 OPTION, REMOVE AND DISCARD THREE SCREWS,
ADD #4-40 THREADED INSERT AT 7 LOCATIONS.

- 3- CONSTRUCTION:
- EPOXY FILLED ALUMINUM BOX
 - CHEM FILM PER MIL-C-5541 CLASS 1A

- 4- TOLERANCE:
- A- OVERALL +/-0.025 [0.64]
 - B- PIN TO PIN +/-0.015 [0.38]
 - C- MOUNTING HOLE LOCATION +/- 0.025 [0.64]

| UNLESS OTHERWISE SPECIFIED DIMENSION ARE IN INCHES TOLERANCES ARE: | | CUSTOMER | |
|--------------------------------------------------------------------|--------------|----------------------------------|-----------|
| 2 PL DEC ± .02 | FRACT ± 1/64 | DRAWN | S. Orban |
| 3 PL DEC ± .010 | ANGLES ± 2' | CHKD | D. Parant |
| | | MFG | N/A |
| | | MFG ENGR | N/A |
| | | PROCESS | N/A |
| | | QA | N/A |
| | | CHIEF ENG | N/A |
| | | CFN: OL-032-A_revE_HP_C_250W.dwg | |

ULTRAVOLT, INC.
1800 OCEAN AVE. FRNT, RONKONKOMA, N.Y. 11779
1-631-471-4444

OUTLINE
HIGH POWER 'C' SERIES
250W 1/8KV - 6KV

| | | | | |
|---|--------------|----------|---------------------------|--------------|
| B | PART NUMBER: | OL-032-A | REV | E |
| | SCALE | NONE | DO NOT SCALE THIS DRAWING | SHEET 1 OF 1 |

A

A

2

1