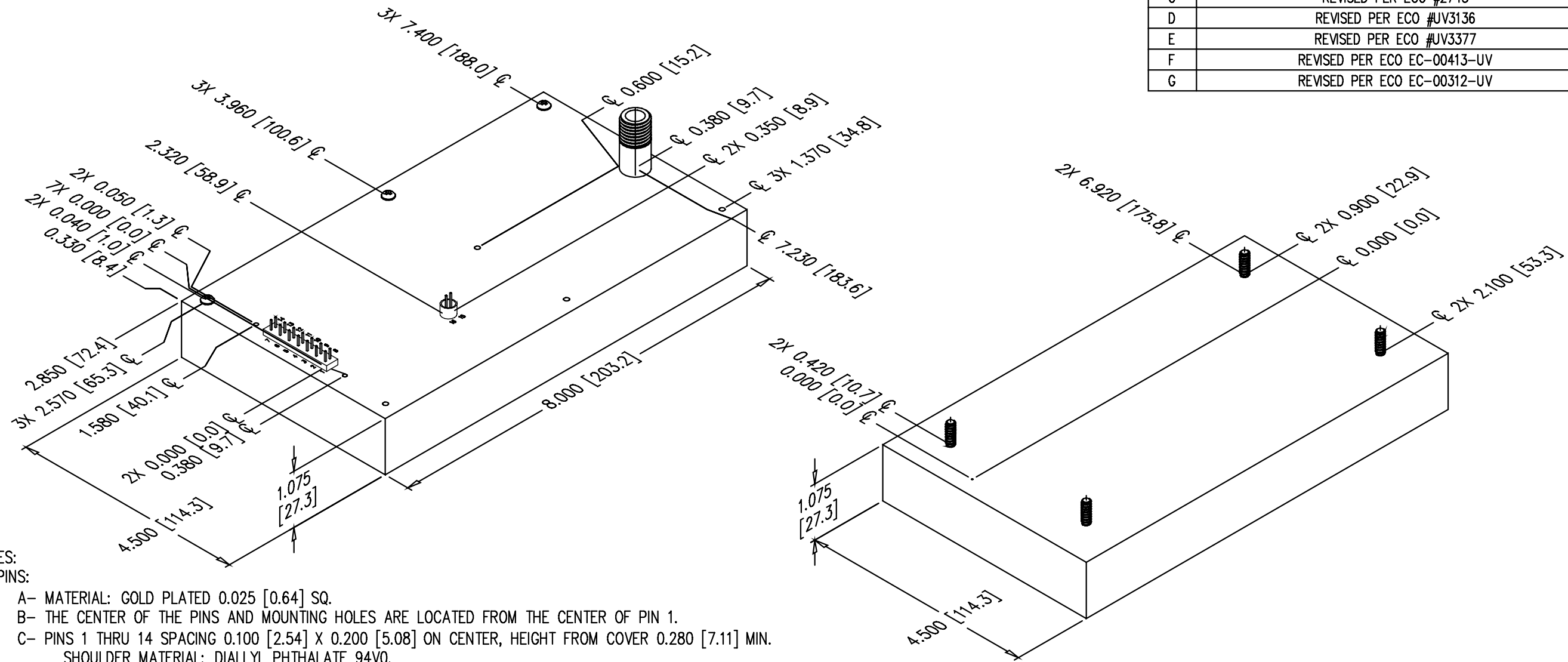


2

PROPRIETARY STATEMENT: ULTRAVOLT INC.
CONFIDENTIAL DRAWING

REVISIONS				
LTR	DESCRIPTION	BY	DATE	APPD
A	NEW RELEASE	D.S.	2/4/99	J.M.
B	ADDED METRIC DIM AS PER ECO #1935	J.T.	2/17/00	J.M.
C	REVISED PER ECO #2743	SRO	3/1/02	D.P.
D	REVISED PER ECO #UV3136	SG	11/26/03	SRO
E	REVISED PER ECO #UV3377	SRO	6/23/05	CP
F	REVISED PER ECO EC-00413-UV	JC	4/16/07	SRO
G	REVISED PER ECO EC-00312-UV	SRO	8/1/08	DB

B



- NOTES:
- PINS:
 - A- MATERIAL: GOLD PLATED 0.025 [0.64] SQ.
 - B- THE CENTER OF THE PINS AND MOUNTING HOLES ARE LOCATED FROM THE CENTER OF PIN 1.
 - C- PINS 1 THRU 14 SPACING 0.100 [2.54] X 0.200 [5.08] ON CENTER, HEIGHT FROM COVER 0.280 [7.11] MIN. SHOULDER MATERIAL: DIALLYL PHTHALATE 94VO, SHOULDER SIZE: 0.250 [6.35] X 1.400 [35.56] X 0.100 [2.54] HEIGHT FROM COVER. MTG HOLES FOR RETENTION BRACKET #2-56 X 0.125 [3.8] DEEP.
 - D- PINS 15 & 16 SPACING 0.100 [2.54] ON CENTER, HEIGHT FROM COVER 0.450 [11.43] MIN. SHOULDER MATERIAL: ULTEM, SHOULDER SIZE: OD 0.260 [6.60] X ID 0.230 [5.84] X 0.220 [5.60] HEIGHT FROM COVER.
 - E- H.V. CONNECTOR LGH SERIES, HEIGHT FROM COVER 0.600 [15.24] MIN. MATERIAL: DIALLYL PHTHALATE 94VO.
 - MOUNTING:
 - A- BOTTOM MTG, #8-32X0.440 LONG THREADED STUD
 - B- Z11 OPTION, REMOVE AND DISCARD THREE SCREWS, ADD #4-40 THREADED INSERT AT 7 LOCATIONS.
 - CONSTRUCTION:
 - EPOXY FILLED ALUMINUM BOX CHEM FILM PER MIL-C-5541 CLASS 1A
 - TOLERANCE:
 - A- OVERALL +/-0.025 [0.64]
 - B- PIN TO PIN +/-0.015 [0.38]
 - C- MOUNTING HOLE LOCATION +/- 0.025 [0.64]

A

A

UNLESS OTHERWISE SPECIFIED DIMENSION ARE IN INCHES TOLERANCES ARE:		CUSTOMER	
2 PL DEC ± .02	FRACT ± 1/64	DRAWN	S. Orban
3 PL DEC ± .010	ANGLES ± 2°	CHKD	D. Parant
		MFG	N/A
		MFG ENGR	N/A
		PROCESS	N/A
		QA	N/A
		CHIEF ENG	N/A
		CFN: OL-031_revG_HP_C_BKV-15KV.dwg	

ULTRAVOLT, INC.
1800 OCEAN AVE. FRNT, RONKONKOMA, N.Y. 11779
1-631-471-4444

OUTLINE
HIGH POWER 'C' SERIES
(60W & 125W) 8KV - 15KV

PART NUMBER: OL-031 REV G

SCALE NONE DO NOT SCALE THIS DRAWING SHEET 1 OF 1

DASH NUMBER	NEXT ASSY	USED ON
APPLICATION		

2

1