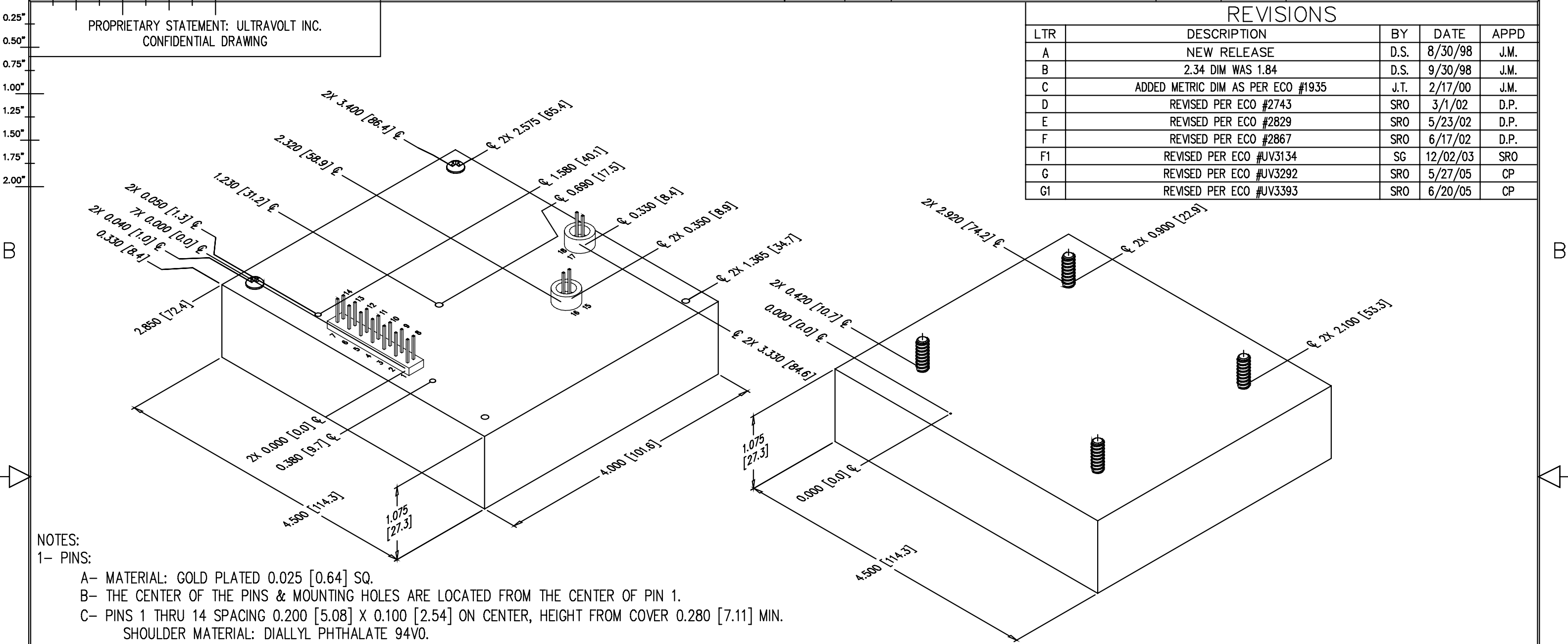


0.00" 0.25" 0.50" 0.75" 1.00" 1.25" 1.50" 1.75" 2.00"

PROPRIETARY STATEMENT: ULTRAVOLT INC.
CONFIDENTIAL DRAWING

B PART NUMBER: OL-030 REV G1 SH 1

REVISIONS				
LTR	DESCRIPTION	BY	DATE	APPD
A	NEW RELEASE	D.S.	8/30/98	J.M.
B	2.34 DIM WAS 1.84	D.S.	9/30/98	J.M.
C	ADDED METRIC DIM AS PER ECO #1935	J.T.	2/17/00	J.M.
D	REVISED PER ECO #2743	SRO	3/1/02	D.P.
E	REVISED PER ECO #2829	SRO	5/23/02	D.P.
F	REVISED PER ECO #2867	SRO	6/17/02	D.P.
F1	REVISED PER ECO #UV3134	SG	12/02/03	SRO
G	REVISED PER ECO #UV3292	SRO	5/27/05	CP
G1	REVISED PER ECO #UV3393	SRO	6/20/05	CP



NOTES:
 1- PINS:
 A- MATERIAL: GOLD PLATED 0.025 [0.64] SQ.
 B- THE CENTER OF THE PINS & MOUNTING HOLES ARE LOCATED FROM THE CENTER OF PIN 1.
 C- PINS 1 THRU 14 SPACING 0.200 [5.08] X 0.100 [2.54] ON CENTER, HEIGHT FROM COVER 0.280 [7.11] MIN.
 SHOULDER MATERIAL: DIALLYL PHTHALATE 94V0.
 SHOULDER SIZE: 0.250 [6.35] X 1.400 [35.56] X 0.035 [0.89] HEIGHT FROM COVER.
 MTG HOLES FOR RETENTION BRACKET #2-56 X 0.125 [3.18] DP.
 D- PINS 15, 16, 17, 18 SPACING .100 [2.54] ON CENTER. HEIGHT FROM COVER 0.280 [7.11] MIN.
 SHOULDER MATERIAL: DIALLYL PHTHALATE 94V0.
 SHOULDER SIZE: OD 0.380 [9.65] X ID 0.250 [6.35] X 0.200 [5.0] HEIGHT FROM COVER.

2- MOUNTING:
 A- BOTTOM MTG, #8-32 X 0.440 LONG THREADED STUD.
 B- OPTION Z11- TOP MTG, REMOVE & DISCARD TWO SCREWS,
 ADD 5X #4-40 THREAD MALE/FEMALE STANDOFF.

3- CONSTRUCTION:
 EPOXY FILLED ALUMINUM BOX CHEM FILM,
 PER MIL-C-5541 CLASS 1A.

4- TOLERANCE:
 A- OVERALL +/-0.025 [0.64]
 B- PIN TO PIN +/-0.015 [0.38]
 C- MOUNTING HOLE LOCATION +/- 0.025 [0.64]

UNLESS OTHERWISE SPECIFIED DIMENSION ARE IN INCHES TOLERANCES ARE:		CUSTOMER	
2 PL DEC ± .02	FRACT ± 1/64	DRAWN	S. Orban
3 PL DEC ± .010	ANGLES ± 2'	CHKD	D. Parant
		MFG	N/A
		MFG ENGR	N/A
		PROCESS	N/A
		QA	N/A
		CHIEF ENG	N/A
		CFN: OL-030_revG1_1-8KV-6KV.dwg	

ULTRAVOLT, INC.
 1800 OCEAN AVE. FRNT, RONKONKOMA, N.Y. 11779
 1-631-471-4444

OUTLINE
 HIGH POWER 'C' SERIES
 (60W & 125W) 1/8KV - 6KV

PART NUMBER: OL-030 REV G1

SCALE NONE DO NOT SCALE THIS DRAWING SHEET 1 OF 1